

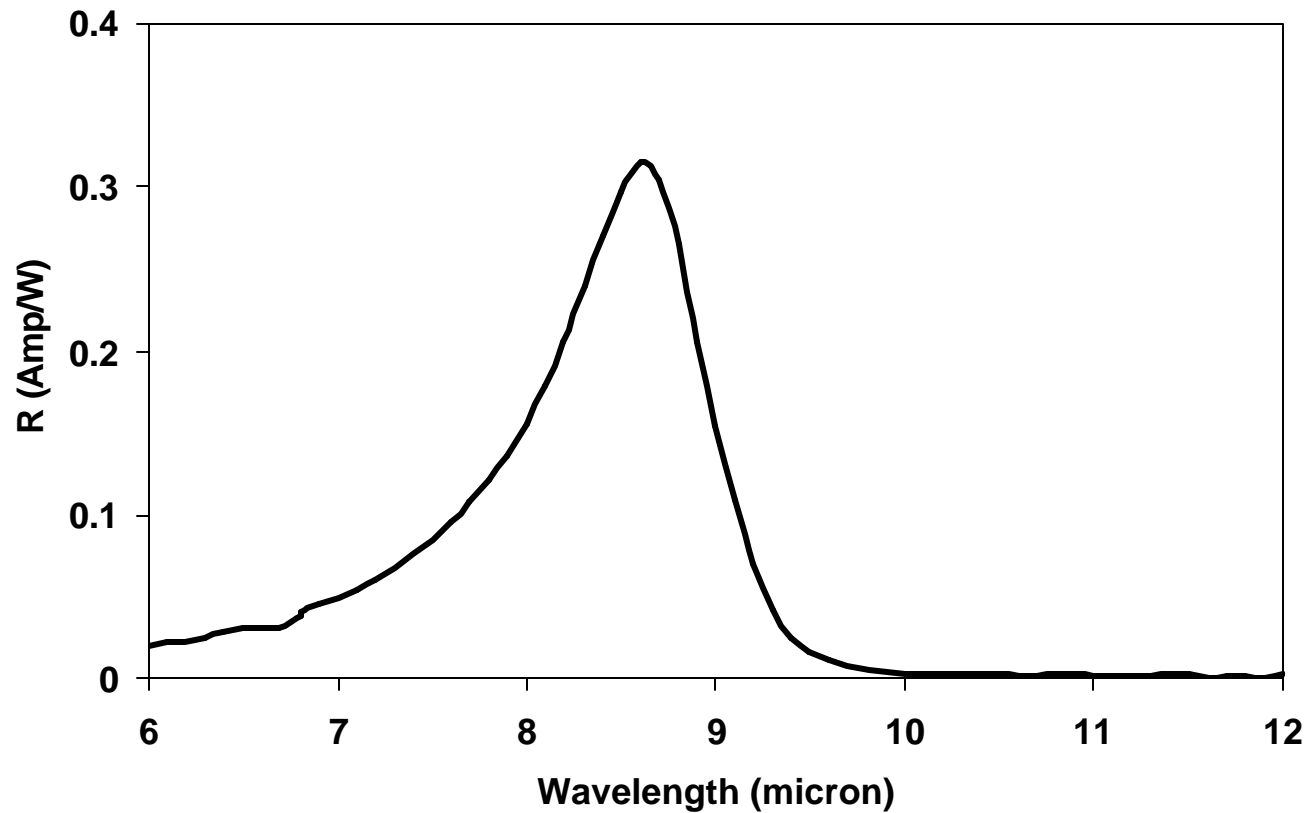


**QWIPTECH**<sup>®</sup>  
SEE THE HEAT

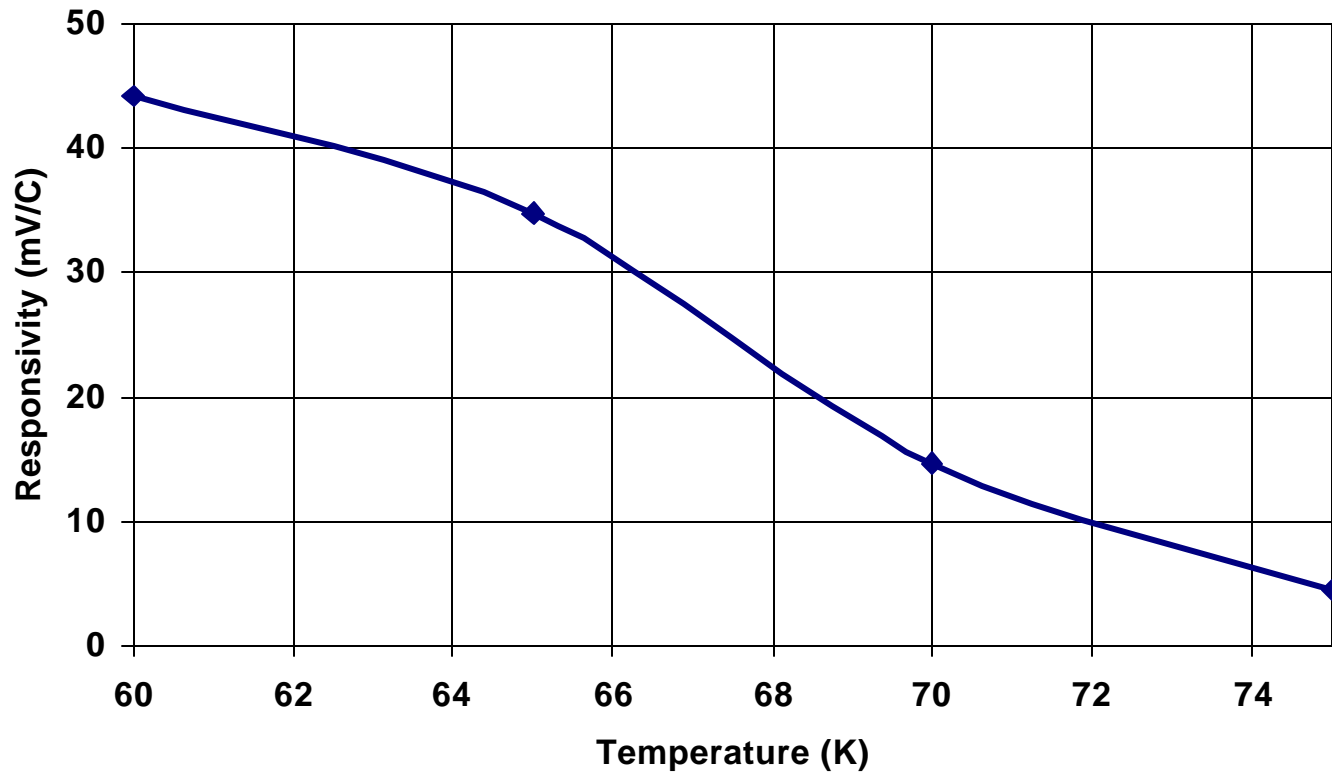
---

# *Sensor Optimization*

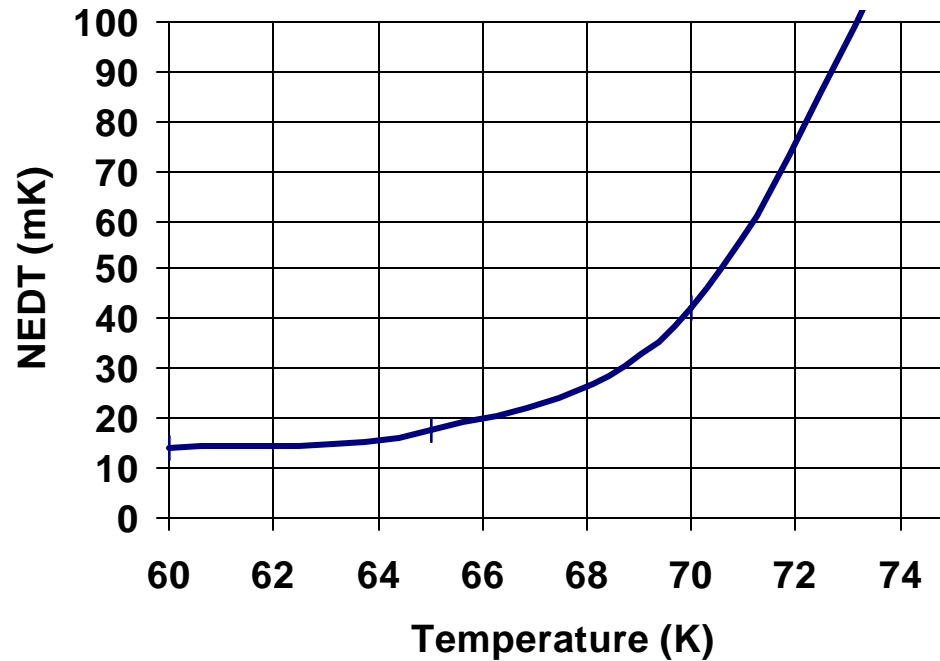
**Responsivity  
( $V_B = -2V$ )**



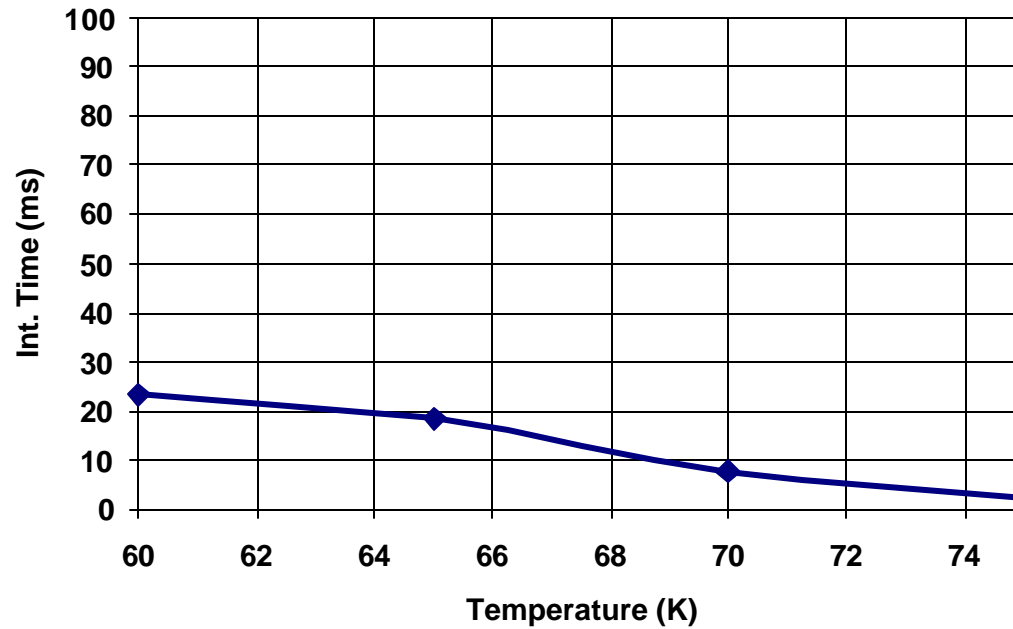
## Responsivity vs. T (23°C, f/4, 2V)



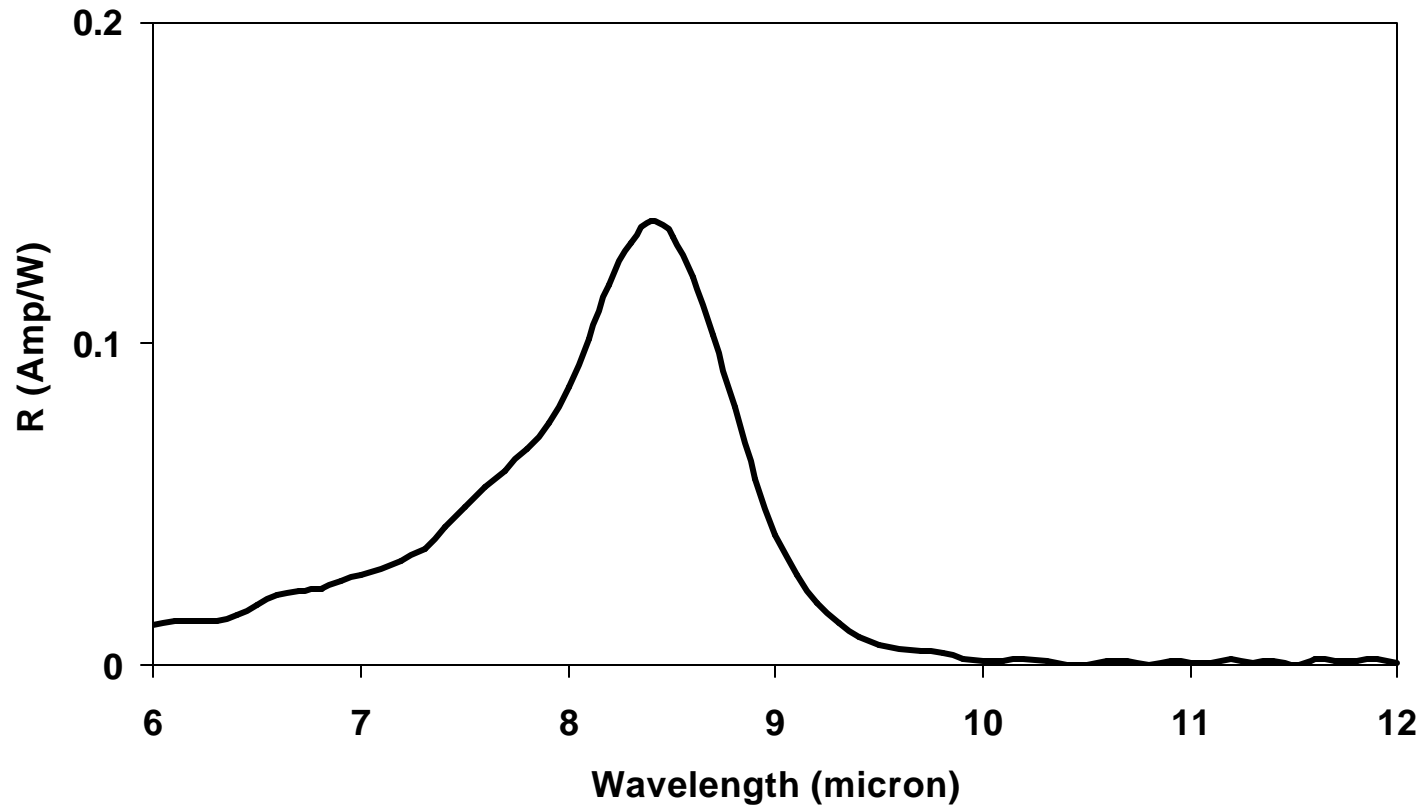
**NEDT vs. T  
(23°C, f/4, 2V)**



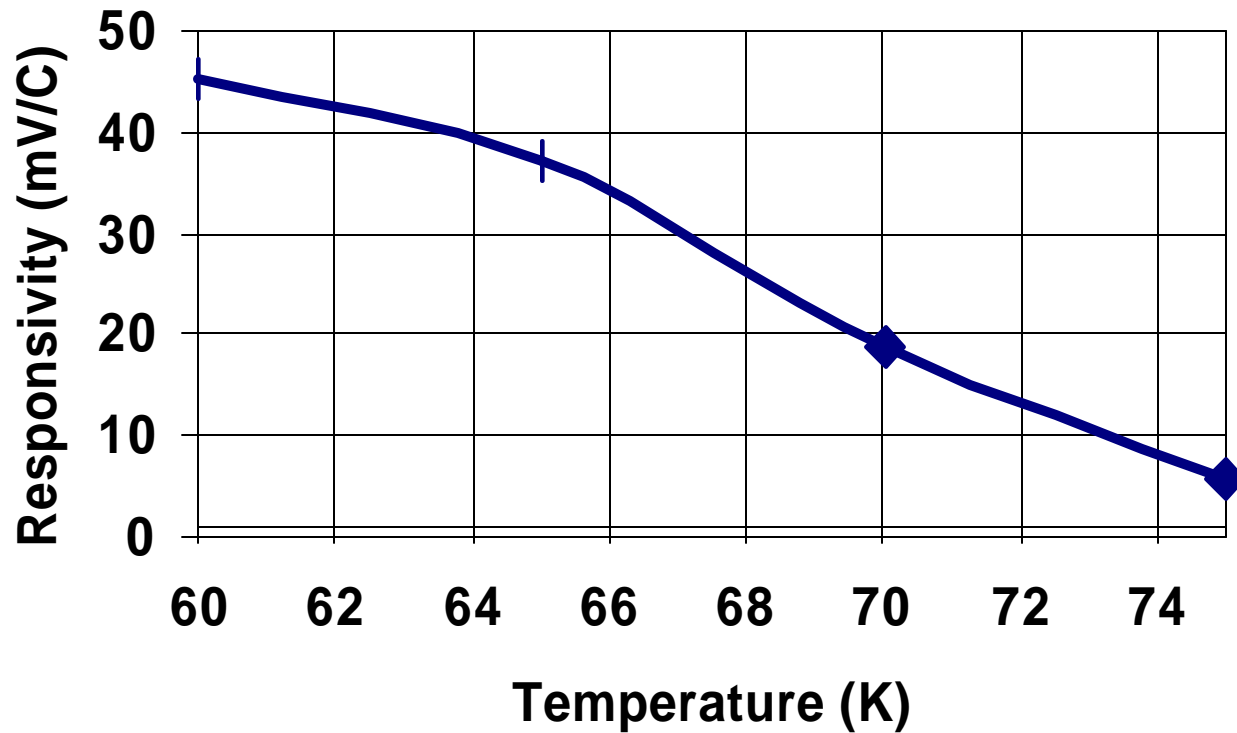
## Int. Time vs. T (23°C, f/4, 2V)



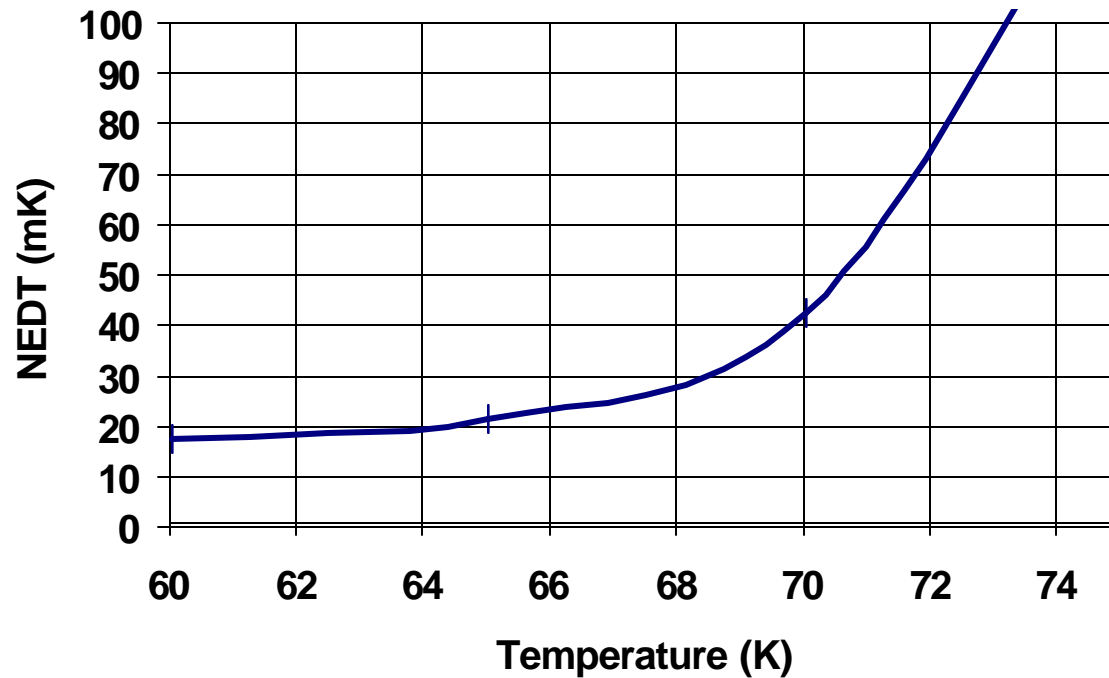
**Responsivity  
( $V_B = -2V$ )**



**Responsivity vs. T  
(23°C, f/4, 2V)**

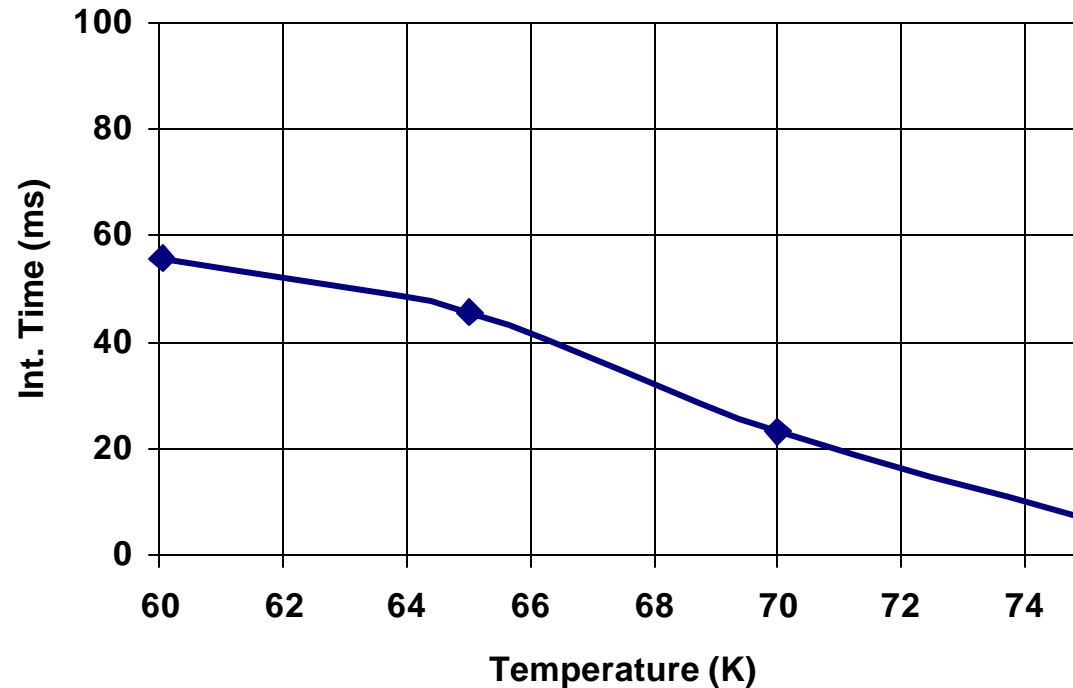


**NEDT vs. T  
(23°C, f/4, 2V)**





**Int. Time vs. T  
(23°C, f/4, 2V)**





## Performance Trade-Offs (f/4 optics, 23°C background)

Peak $\lambda$ ( $\mu\text{m}$ )	50% $\lambda$ ( $\mu\text{m}$ )	Operating T (K)	Responsivity (mV/C)	NEDT (mK)
8.6	9.0	69 K	18	35
8.6	9.0	67 K	25	26
8.4	8.9	67 K	30	25